



## **Slate Professional Services Overview**

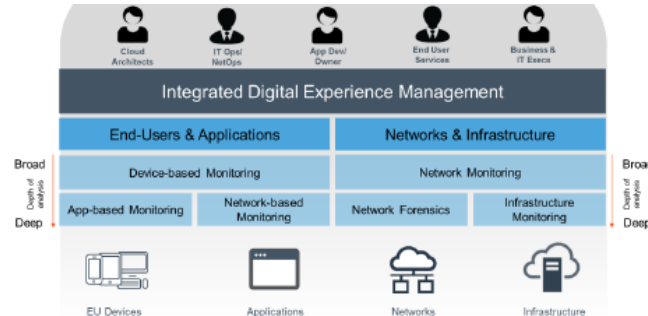
**Our Vision:** Ensure excellent end-user experience for any end-user, any application, anytime, anywhere.

## **Slate Network Management Performance Review**

**Vendor agnostic assessment of network management platforms and improvement roadmap**

Applications are getting more complex, multi-platform, multi-tier, and span physical, virtual, and hybrid cloud environments. IT struggles to identify root cause and typical enterprise has multiple tools in silo's used by multiple teams. This fragmented approach no longer works. Collaboration is a MUST! In a digital future it is required to reduce silos and encourage cooperation between teams, provide common information to all teams and management, provide relevant stakeholder views with a single source of truth and to get to the answer faster and use less staff hours to do it.

The Slate NMPR is a vendor-agnostic evaluation of network management platforms, infrastructure for compliance, availability and best practices. It provides enhanced visibility into network infrastructure, network operations and an assessment of network utilisation and analysis of capacity.



The final deliverables include relevant recommendations to improve network management platforms and operations across IT silos and a roadmap to complete end-user experience visibility, eliminate visibility gaps, reduce outages and reduce outage durations.

## **Slate Network Health Assessment**

**Find network troubles before trouble find you**

Also referred to as the CCIE-in-a-box assessment, the SNHA discover all devices on your network, where they reside and how they link together. Proactively monitor and analyse network configurations to identify configuration problems early. Apply deep analysis and insights to optimize your network, avoid outages and identify rogue devices. Easily inventory and visualize multiple topology layers and network constructs, such as VLANs, routes and virtual networks.

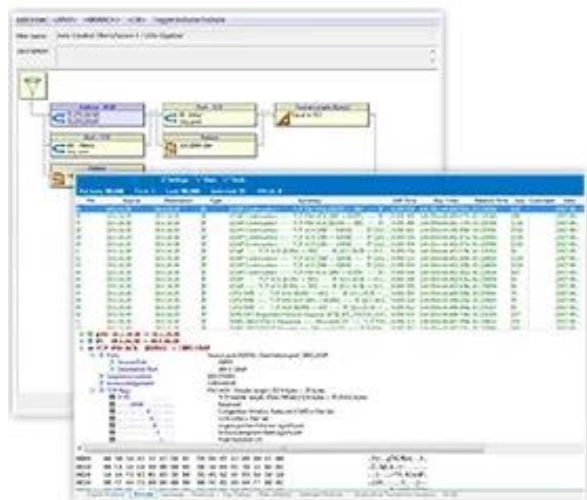
The final deliverables include an executive overview report, including a network health score, and technical detail listings of issues that your IT organisation, or Slate can remediate.



## Slate Network Performance Assessment

Stop the blame game and take the war out the war-room

The Network Manager is often caught up in the blame-game between multiple IT solos or service providers to triage and resolve degraded response times or outages. Each silo ill report perfect health, but the problem still resides. This result in prolonged trouble resolution, loss in productivity, increased cost and many problems go unsolved.



The Slate Network Performance Assessment (S-NPA) deploys network packet analysers at strategic monitoring points in your network to triage application / network issues, triage and assist with remedial action. It monitors unified communications (UC) deployments, network security performance, applications, and troubleshoots complex network traffic including VM environments.

The final deliverables include an executive overview and technical detail reports of issues that your IT organisation, or Slate can remediate.

## Slate Cloud Migration Assessment

Successfully migrate to cloud

Move your servers, apps, databases, and other workloads to Azure using the migration approach that's right for your business. There's no single cloud migration process that works for every organization, but the main implementation stages are similar for all organizations and industries: **define your strategy, make a plan, ready your organization, and adopt the cloud**—then **govern and manage** your environment.



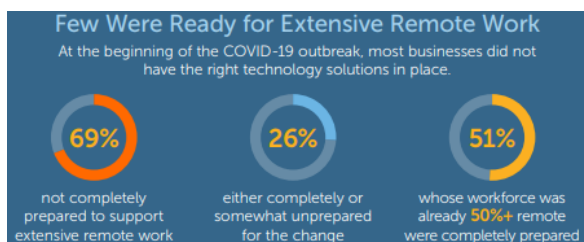
The **Microsoft Cloud Adoption Framework for Azure** is a proven approach that is designed to help you through all stages of your project with confidence—from cloud assessment and migration planning to securing and optimizing your environment.

Slate will help you to successfully migrate significant workloads to the cloud. Your organisation will benefit from substantial IT costs savings, as well as improvements in productivity, business agility, and operational resilience. Migrations to cloud include moving any workload from an on-premises environment, hosting facility, or other public cloud. Slate is working with many organisations to migrate workloads such as applications, websites, databases, storage, physical or virtual servers, or entire data centers. Based on our years of It experience, we have built a complete and proven approach for migrating workloads to cloud, so that you can gain business benefits faster.

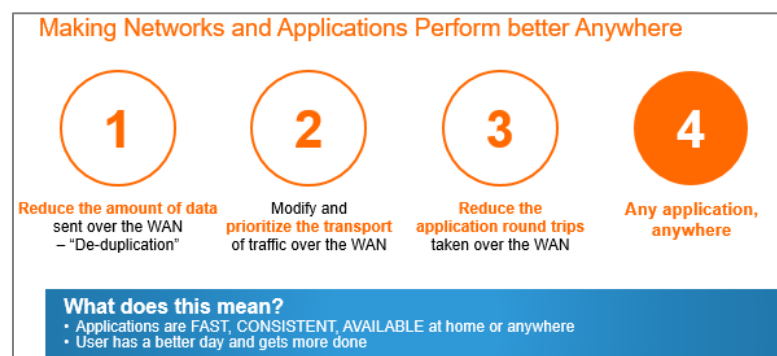
## O365 and Cloud Accelerator

**Improve Productivity and Performance When Working-from-Home or On-the-Go. Remote / Cloud users can continue to work as if the application itself was running on a local server**

With recent COVID-19 events impacting everyone, companies are taking swift measures to protect the well-being of their employees and quickly roll out work-from-home initiatives. It is important to keep your employees safe, but with the majority working-from-home and remote locations, network and application performance can become incredibly unpredictable, and slowdowns can quickly impact business. Is your organisation prepared for a remote workforce?



WAN Optimization is one option to provide more bandwidth, BUT it's important to stress that in order to make the application experience better, especially for today's users, WAN optimisation technology **MUST** be able to do three things and these 3 things are the foundation for improved remote performance and consistency.

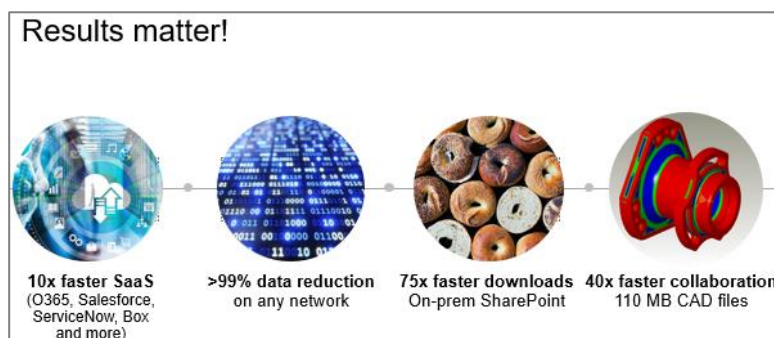


1 – We greatly reduce the amount of data sent across the WAN. (meaning we avoid sending the same data elements more than once) – in fact, we **reduce byte level data on the network by up to 99%**.

2 – We intelligently **prioritize the rules that apply to the transport** of the data across the WAN. (prioritizes the way data is sent over distance, or optimizes the protocols across a network)

3 – We **reduce the number of application round trips across the WAN**. (and this directly applies to minimizing the impact of latency on application performance)

4 –When it comes to the modern enterprise: WAN Optimization **MUST** be able to **work with any type of application (on-prem, SaaS, cloud workloads)**, for users wherever they might be. Because we are no longer doing our work 9-5 in branch offices and going home. Slate will work with your IT organisation to achieve the following results:

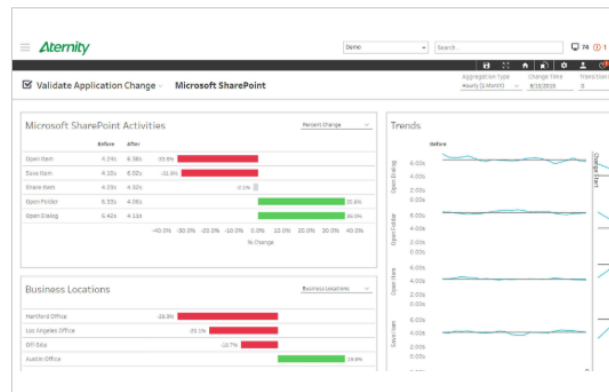


## End-user Experience Assessment

**De-risk your cloud migration projects and manage performance before, during, and after migration.**

Migrating apps, data, and workloads to the cloud has allowed organizations to focus resources on agility, flexibility, and innovation—while avoiding capital expenditure. Compute, storage, middleware, or entire stacks can be provisioned on-demand without the hassle of managing the delivery infrastructure. Unsurprisingly fully 96% of companies are using the cloud today and 81% have a multi-cloud strategy. But giving up dedicated data centres and moving to multi-tenant environments comes with its own risks and pitfalls of limited visibility, constant flux and cloud-native complexity.

The Slate EUX Assessment assist you to validate performance before and after cloud migration, quickly identify and resolve issues, get monitoring and observability across your cloud-native apps, ensure SaaS apps meet business needs, setup SLAs based on the performance your users actual experience and provide application dependency maps of key applications.

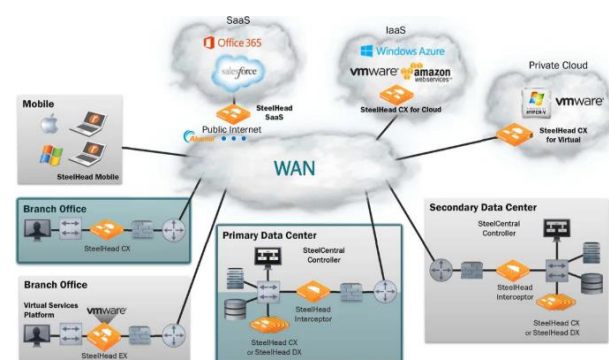


## Network Architecture Review

**Future-proof your network**

When it comes to their wide area networks, enterprise and campus networks, companies need to plan to provide a seamless end-user experience, while at the same time maintaining a robust core to provide a scalable and easy to operate architecture. Recent COVID-19 events forced companies to design infrastructure to cater for a remote workforce and ensure user productivity and improve security. Hybrid networks are the new norm and migration to cloud and SD-WAN are key considerations.

The Slate Network Architecture Review is a review and analysis of relevant network artifacts (e.g. network diagrams, security requirements, technology inventory, DMZ, performance reports ) to identify how the network architecture and controls protect critical assets, sensitive data stores and business-critical interconnections in accordance with the organization's business and security objectives, including your cloud strategy.



The Network Architecture Review service is intended to help customers review their existing architecture for industry best practices, identify problem areas if any, and provide a clear and concise path for growing the network based on business and technology requirements. This review will focus on the data center, hybrid, campus, core and edge networks to address any immediate concerns and provide a recommendations document based on the organisation's business goals.

This service includes the following phases: Phase 1: Information gathering. Phase 2: Analysis and documentation. Phase 3: Findings and recommendations.

## Contact Slate Communications

Contact Slate Communications today and schedule a technology briefing and scoping session.

Hardy Van Wyk      [hardy@slatecommunications.co.za](mailto:hardy@slatecommunications.co.za)      +27 83 326 1091

Service Enquiries      [info@slatecommunications.co.za](mailto:info@slatecommunications.co.za)      +27 83 326 1764